

WARRANTY

GERNI Warranty Process

Our goods come with guarantees that cannot be excluded under Australian Consumer Law. You are entitled to a replacement or refund for a major failure and for compensation for any other reasonably foreseeable loss or damage. You are also entitled to have the goods repaired or replaced if the goods fail to be of acceptable quality and the failure does not amount to a major failure.

GERNI – 25 Fox Drive, Dandenong South, Victoria, 3175 Australia provides the following warranty in relation to your Gerni Pressure Washer machine.

DOMESTIC WARRANTY

Definition; A machine purchased for domestic household use.

Gerni warrants that, subject to the exclusions and limitations below, the product will be free from defects in the materials and workmanship for the duration of the warranty period from the date of purchase.

2 YEAR STANDARD WARRANTY

Machines & accessories included are as follows: Gerni 3300*, 3400*, 3600*, 5000*, 9200

*Subject to an additional 3 year extended warranty with online registration at www.gerni.com.au

5 YEAR STANDARD WARRANTY

Machines included are as follows: Gerni 5300*, 7000*, 7300*

*Subject to an additional 2 year extended warranty with online registration at www.gerni.com.au

2 YEAR STANDARD WARRANTY

All Gerni accessories are subject to a 2 year standard warranty, to qualify for an exchange of your product you must have proof of purchase*.

*Extended warranty is not applicable to Gerni accessories and Wet & Dry Vacuums, only pressure washer machines.

GERNI Warranty Claims

Equipment defects covered by the warranty will be repaired or replaced by one of our Authorised agents within the Gerni organisation. Find your local service agent here: www.gerni.com.au

- If a fault occurs, the user must first take their pressure washer machine to the closest Gerni Authorised Agent to be diagnosed for fault. It is important that you have the pressure washer serial number accompanied with your proof of purchase receipt and a copy of your Gerni online-registration certificate to ensure your pressure washer is covered under warranty.
- If a fault is diagnosed and your machine is inside stated warranty period, then your machine will be repaired or replaced at no cost. If your machine is diagnosed faulty but your machine has fallen outside the stated warranty period, the cost of diagnosis or repair will be covered by the user.

Exclusions:

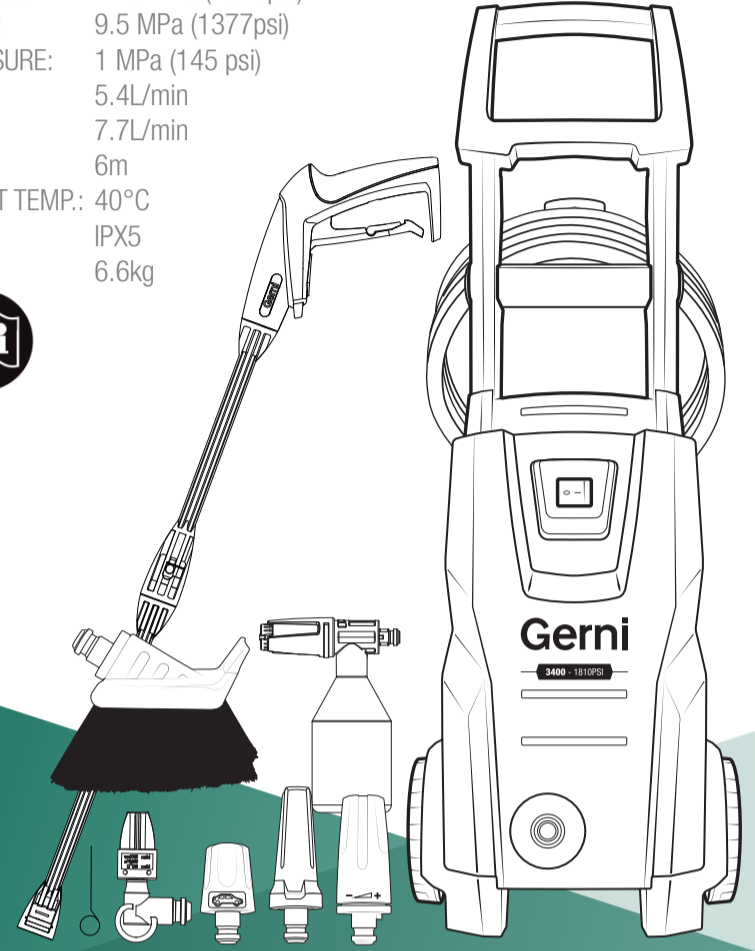
- The product has been modified, repaired, or serviced by someone other than a Gerni authorised service centre.
- The product has been used other than for the purpose to which it is designed.
- The product has been exposed to user abuse such as knocks, bumps and extreme temperatures or conditions.

Gerni 3400

HIGH PRESSURE WASHER ORIGINAL INSTRUCTIONS

SPECIFICATIONS

VOLTAGE:	220-240V~50-60Hz
POWER:	1500W
ALLOWABLE PRESSURE:	12.5 MPa (1810psi)
RATED PRESSURE:	9.5 MPa (1377psi)
MAX. INLET PRESSURE:	1 MPa (145 psi)
RATED FLOW:	5.4L/min
MAX. FLOW RATE:	7.7L/min
HOSE LENGTH:	6m
MAX. WATER INLET TEMP.:	40°C
IP RATING:	IPX5
WEIGHT:	6.6kg



5*
YEAR
WARRANTY
2 Year Standard
3 Year Extended

Gerni 25 FOX DRIVE, DANDENONG SOUTH, VICTORIA, 3175 AUSTRALIA.

GPW-3400

HIGH PRESSURE WASHER SAFETY WARNINGS

WARNING! This machine is not intended for use by persons (including children) with reduced physical, sensory or mental capabilities, or lack of experience and knowledge.

WARNING! High pressure injection injuries are considered to be medical emergencies. In the event of a high pressure injection injury occurring, seek medical advice immediately.

WARNING! It is prohibited to use Pressure Washers on materials containing asbestos (Cement sheet roofs, Fences, Walls etc.). Large numbers of asbestos fibres may be released into the air, posing a serious health hazard. If unsure about the materials you are spraying, it is recommended that you contact your local council or government authority.

WARNING! Do not use pressure washers while working on ladders. The recoil from operating the spray gun could unbalance you and throw you off the ladder.

WARNING! When cleaning walls, do not spray windows as the high pressure can crack them.

- Before connecting a pressure washer to a power source (mains switch power point receptacle, outlet, etc.) be sure that the voltage supply is the same as that specified on the nameplate of the pressure washer. A power source with a voltage greater than that specified for the machine can result in serious injury to the user, as well as damage to the pressure washer. If in doubt, do not plug in the machine. Using a power source with a voltage less than the nameplate rating is harmful to the motor.
- Unsafe operation of your high pressure washer could lead to serious injury or death to you or others. Improper control of gun/ward can result in injuries to self, others and property damage. Reactive force from the spray can result in gun/lance movement, potentially causing the operator to slip, fall or misdirect the spray.
- Become familiar with the operation and controls of the pressure washer.
- Keep children away from the pressure washer at all times.
- Never modify or remove the safety features of this product.
- Do not operate the machine with missing, broken or unauthorized parts.
- Never leave wand unattended while unit is running.
- Keep work area free of obstacles.
- Stand on stable surface and grip gun/lance firmly. Expect the gun to kick back when engaged.

- Do not use to pump flammable or explosive liquids such as gasoline, fuel oil, kerosene solvents or thinners. Pump should only be used with liquids compatible with pressure washer component materials. Failure to follow to this warning can result in serious personal injury, death and/or property damage.

ELECTRICAL SAFETY

WARNING! When using electric machines basic safety precautions should always be followed to reduce the risk of fire, electric shock and personal injury.

- Read the whole manual carefully and make sure you know how to switch the machine off in an emergency, before operating the machine. Save these instructions and other documents supplied with this machine for future reference.
- This machine is not intended for use by persons (including children) with reduced physical, sensory or mental capabilities, or lack of experience and knowledge.
- Always check that the power supply corresponds to the voltage on the rating plate.
- The power supply for this product should be protected by a residual current device (rated at 30mA or less). A residual current device reduces the risk of electric shock.

WARNING! Read all safety warnings, instructions, illustrations and specifications provided with this machine. Failure to follow all instructions listed below may result in electric shock, fire and/or serious injury.

Save all warnings and instructions for future reference.

The term "machine" in the warnings refers to your mains-operated (corded) machine or battery-operated (cordless) machine.

- 1) Work area safety
 - a) Keep work area clean and well lit. Cluttered or dark areas invite accidents.
 - b) Do not operate machines in explosive atmospheres, such as in the presence of flammable liquids, gases or dust. Machines create sparks which may ignite the dust or fumes.
 - c) Keep children and bystanders away while operating a machine. Distractions can cause you to lose control.
- 2) Electrical safety
 - a) Machine plugs must match the outlet. Never modify the plug in any way. Do not use any adapter plugs with earthed (grounded) machines. Unmodified plugs and matching outlets will reduce risk of electric shock.
 - b) Avoid body contact with earthed or grounded surfaces, such as pipes, radiators, ranges and refrigerators. There is an increased risk of electric shock if your body is earthed or grounded.
 - c) Do not expose machines to rain or wet conditions. Water entering a machine will increase the risk of electric shock.
 - d) Do not abuse the cord. Never use the cord for carrying, pulling or unplugging the machine. Keep cord away from heat, oil, sharp edges or moving parts. Damaged or entangled cords increase the risk of electric shock.
 - e) When operating a machine outdoors, use an extension cord suitable for outdoor use. Use of a cord suitable for outdoor use reduces the risk of electric shock.
 - f) If operating a machine in a damp location is unavoidable, use a residual current device (RCD) protected supply. Use of an RCD reduces the risk of electric shock.
- 3) Personal safety
 - a) Stay alert, watch what you are doing and use common sense when operating a machine. Do not use a machine while you are tired or under the influence of drugs, alcohol or medication. A moment of inattention while operating machines may result in serious personal injury.
 - b) Use personal protective equipment. Always wear eye protection. Protective equipment such as a dust mask, non-skid safety shoes, hard hat or hearing protection used for appropriate conditions will reduce personal injuries.
 - c) Prevent unintentional starting. Ensure the switch is in the off-position before connecting to power source and/or battery pack, picking up or carrying the machine. Carrying machines with your finger on the switch or energising machines that have the switch on invites accidents.

GENERAL MACHINE SAFETY WARNINGS

- This machine has been designed for use with cleaning agents designed for pressure washers. The use of other cleaning agents or chemicals may adversely affect the safety of the machine.
- During use of high pressure cleaners, aerosols may be formed. Inhalation or aerosols can be hazardous to health.
- High pressure jets can be dangerous if subject to misuse. The jet must not be directed at persons, live electrical equipment or the machine itself.
- Do not use the machine within range of persons unless they wear protective clothing.
- Do not direct the jet against yourself or others in order to clean clothes or foot-wear.
- High pressure cleaners shall not be used by children or untrained personnel.
- High pressure hoses, fittings and couplings are important for the safety of the machine. Use only hoses, fittings and couplings recommended by the manufacturer.
- To ensure machine safety, use only original spare parts from the manufacturer or approved by the manufacturer.
- Water that has flowed through backflow preventers is considered to be non-potable.
- Do not use the machine if a supply cord or important parts of the machine are damaged, e.g. safety devices, high pressure hoses, trigger gun.
- Inadequate extension cords can be dangerous. If an extension cord is used, it shall be suitable for outdoor use, and the connection has to be kept dry and off the ground. It is recommended that this is accomplished by means of a cord reel which keeps the socket at least 60 mm above the ground.
- Always switch off the mains disconnecting switch when leaving the machine unattended.
- Depending on the application, shielded nozzles can be used for high pressure cleaning, which will reduce the emission of hydrous aerosols dramatically. However, not all applications allow the use of such a device. If shielded nozzles are not applicable for the protection against aerosols, a respiratory mask of class FFP 2 or equivalent may be needed, depending on the cleaning environment.
- Never touch the mains plug or power outlet with wet hands.
- Always disconnect the product from the power outlet when leaving the machine unattended.
- This product must not be connected to the potable water mains without back flow prevention. Check local and national plumbing regulations before connecting the machine to the potable water mains.
- Do not operate the machine at temperatures below 0 degrees.
- It is recommended that a reinforced garden hose (with minimum diameter of 12mm) is used for the inlet connection.
- Avoid using high pressure washers for long periods of time without breaks. Vibration from tools can be transmitted into your hands and arms.

- Inspect machine cords periodically and if damaged have them replaced by a certified electrician.
- Always use an approved extension lead suitable for the power input of this machine. Before use, inspect the extension lead for signs of damage, wear and ageing. Replace the extension lead if damaged or defective.
- When using an extension lead on a reel, always unwind the lead completely. Do not use a damaged extension lead, or an extension lead that is not suitable for the power input of the machine. Failure to do so may result in a risk of fire and electric shock and will void the warranty.
- If the supply cord is damaged, it must be replaced by a qualified electrician in order to avoid a hazard.

- a) Remove any adjusting key or wrench before turning the machine on. A wrench or a key left attached to a rotating part of the machine may result in personal injury.
- b) Do not overreach. Keep proper footing and balance at all times. This enables better control of the machine in unexpected situations.
- c) Dress properly. Do not wear loose clothing or jewellery. Keep your hair and clothing away from moving parts. Loose clothes, jewellery or long hair can be caught in moving parts.
- d) If devices are provided for the connection of dust extraction and collection facilities, ensure these are connected and properly used. Use of dust collection can reduce dust-related hazards.
- e) Do not let familiarity gained from frequent use of machines allow you to become complacent and ignore machine safety principles. A careless action can cause severe injury within a fraction of a second.
- f) Machine use and care
 - a) Do not force the machine. Use the correct machine for your application. The correct machine will do the job better and safer at the rate for which it was designed.
 - b) Do not use the machine if the switch does not turn it on and off. Any machine that cannot be controlled with the switch is dangerous and must be repaired.
 - c) Disconnect the plug from the power source and/or remove the battery pack, if detachable, from the machine before making any adjustments, changing accessories, or storing machines. Such preventive safety measures reduce the risk of starting the machine accidentally.
 - d) Store idle machines out of the reach of children and do not allow persons unfamiliar with the machine or these instructions to operate the machine. Machines are dangerous in the hands of untrained users.
 - e) Maintain machines and accessories. Check for misalignment or binding of moving parts, breakage of parts and any other condition that may affect the machine's operation. If damaged, have the machine repaired before use. Many accidents are caused by poorly maintained machines.
 - f) Keep cutting machines sharp and clean. Properly maintained cutting machines with sharp cutting edges are less likely to bind and are easier to control.
 - g) Use the machine, accessories and machine bits etc. in accordance with these instructions, taking into account the working conditions and the work to be performed. Use of the machine for operations different from those intended could result in a hazardous situation.
 - h) Keep handles and grasping surfaces dry, clean and free from oil and grease. Slippery handles and grasping surfaces do not allow for safe handling and control of the machine in unexpected situations.
- 5) Service
 - a) Have your machine serviced by a qualified repair person using only identical replacement parts. This will ensure that the safety of the machine is maintained.

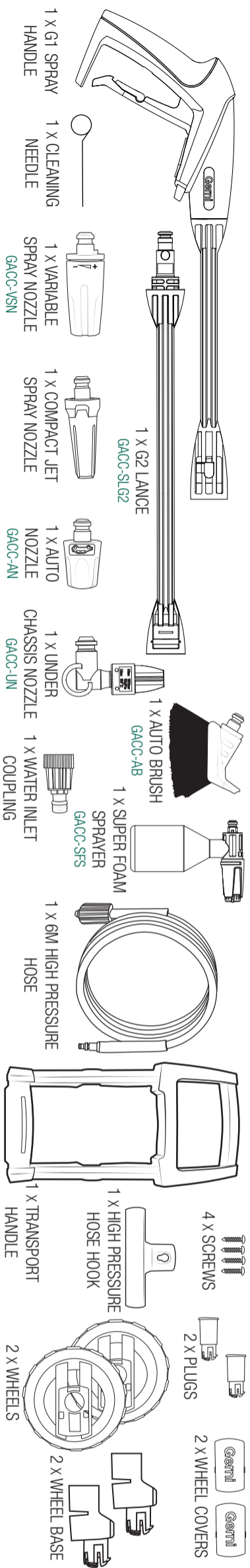
Gerni 25 FOX DRIVE, DANDENONG SOUTH, VICTORIA, 3175 AUSTRALIA

1122

ASSEMBLY

! **WARNING!** Ensure the tool is turned off and disconnected from the power supply before performing any of the following operations.

COMPONENTS



F

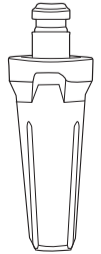
FIT AN ACCESSORY

VARIABLE SPRAY NOZZLE
GACC-VSN




- Everyday general cleaning.
- Twist to adjust 0-15° spray.

COMPACT JET SPRAY NOZZLE



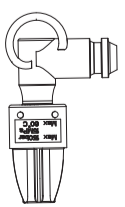
- For removing ingrained dirt.
- High impact rotating jet spray.
- Covers a large area.

AUTO NOZZLE
GACC-AN



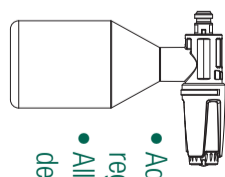
- Gently cleans painted surfaces.
- 60° Spray.
- For cars, motorcycles & bicycles.

UNDER CHASSIS NOZZLE
GACC-UN



- Under-body cleaning.
- For cars, boats and caravans.

SUPER FOAM SPRAYER
GACC-SFS



- Adjustable detergent regulator.
- Allowing for use of detergents & chemicals.

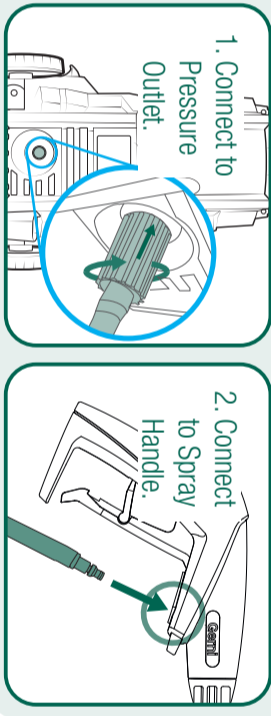
AUTO BRUSH
GACC-AB



- For cars, boats & caravans.
- Soft bristles ensure gentle cleaning.

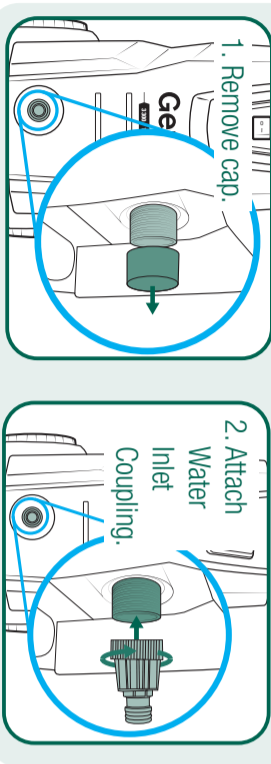
D

SETUP HIGH PRESSURE HOSE



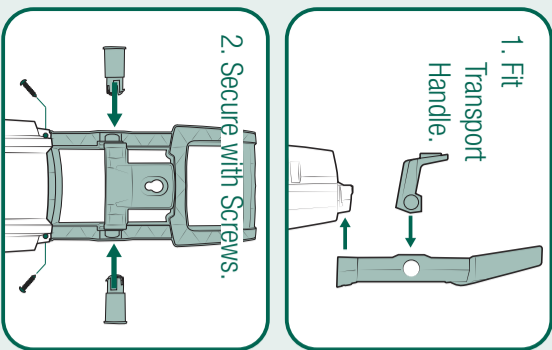
G

ATTACH INLET COUPLING



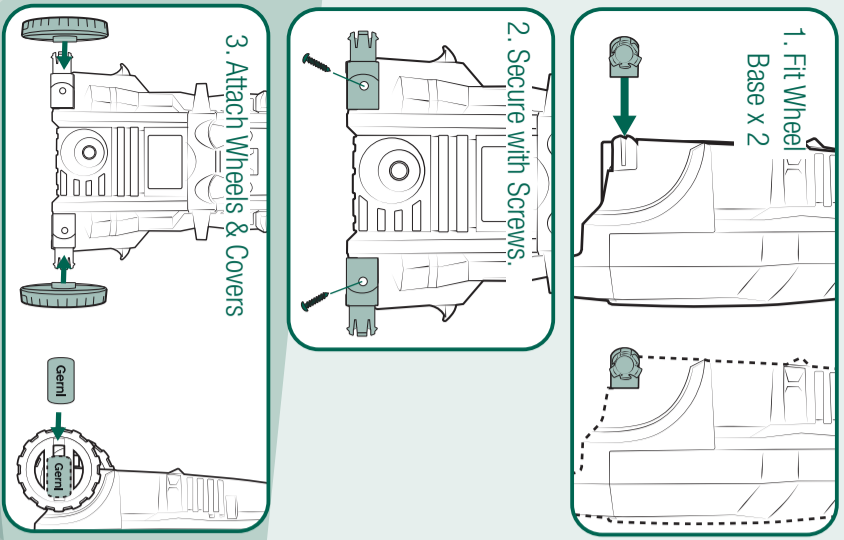
A

TRANSPORT HANDLE



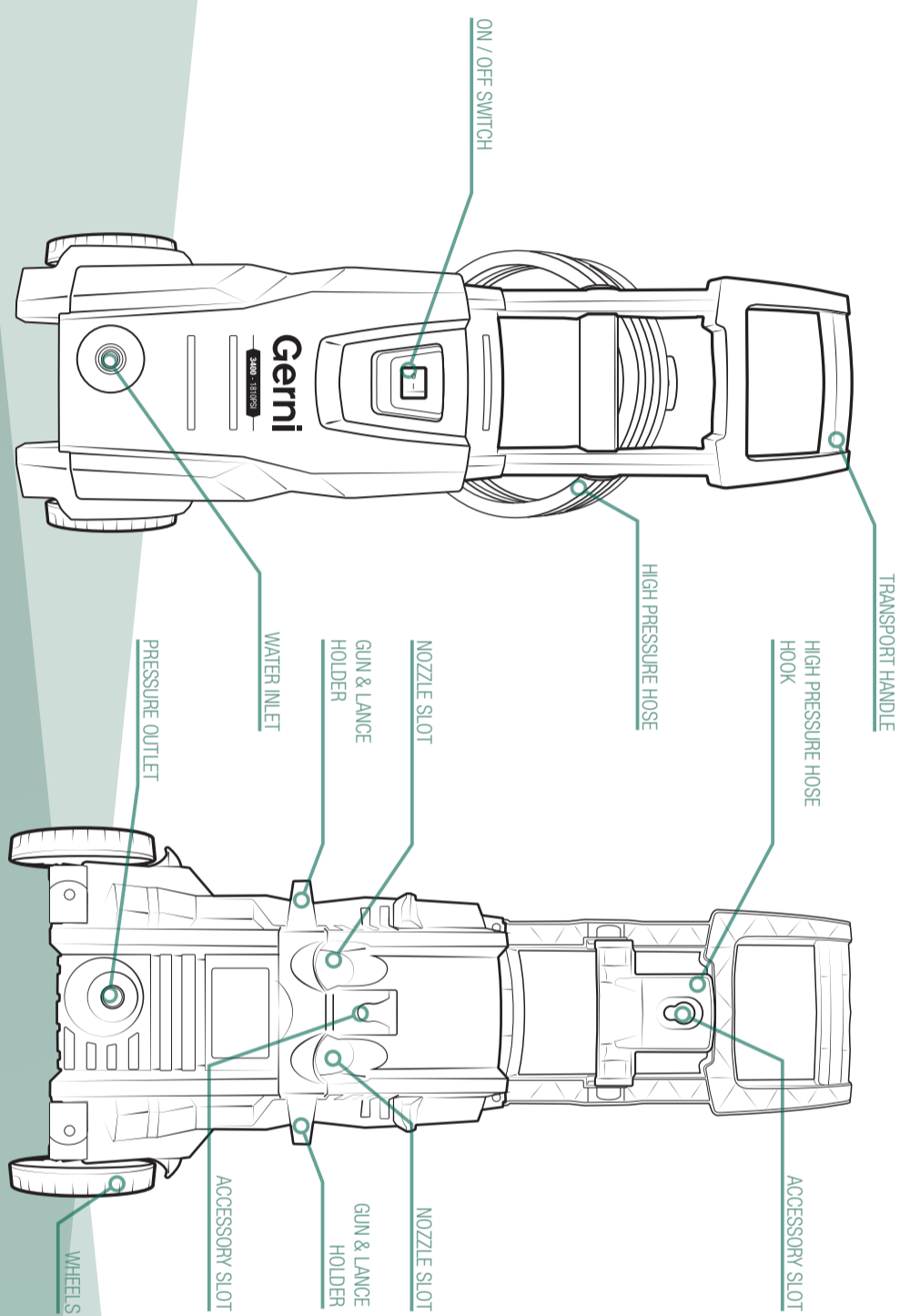
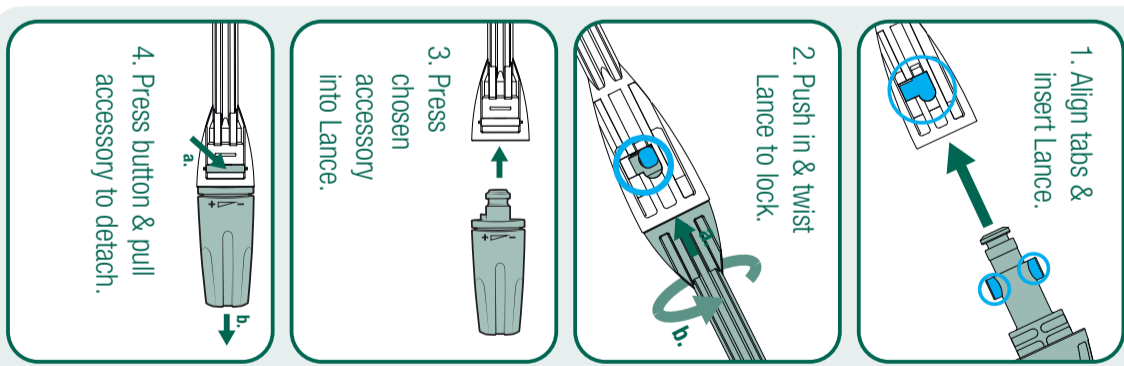
B

WHEEL ASSEMBLY



E

ASSEMBLE SPRAY GUN



USAGE TIPS

WARNING! Ensure the pressure washer is placed on a flat, hard surface. Always have the pressure washer in an upright position during use & be sure to make sure air vents positioned on the rear & underneath the machine is clear & not blocked.

Your Gerni 3400 high Pressure Washer is designed to remove dirt and grime. It is suitable for cleaning small vehicles, small to medium boats, footpaths, fences, outdoor furniture and brickwork with appropriate included accessory for your application. It is not designed to strip paint or kill mildew from surfaces.

- For most effective cleaning, keep spray nozzle from 200 - 600 mm away from cleaning surface.
- If you get the spray nozzle too close, especially using high pressure nozzles, you may damage surface being cleaned.
- Apply a high pressure spray to a small area, and then check the surface for damage. If no damage is found, it is okay to continue cleaning.
- Allow detergents to soak in for 3 - 5 minutes (or as directed by the manufacturer) before washing and rinsing. Reapply as needed to prevent surface from drying. To prevent streaking, do not allow detergent to dry on the surface.
- To rinse detergents, replace the spray bottle with an appropriate nozzle (see Fit An Accessory section). Start at the top of the area to be rinsed, working down the same overlapping strokes as you used for washing and applying detergent.
- Never use the pressure washer water inlet to siphon detergents.
- Lay tarps around the house perimeter to protect plants from debris and accidental spray.
- Hold the spray jet at a 45° angle and at a suitable distance to the surface being washed to prevent gouging the surface. Do not hold the spray jet straight on to the surface as this drives dirt in rather than washing it off.
- Work small areas at a time and use overlapping strokes to prevent streaks.

WARNING! When cleaning walls, be sure to keep spray nozzle more than 500mm away from windows as the high pressure can crack them.

Washing your car

- With the Auto Nozzle attached, loosen and rinse off any dirt.
- Change to the Super Foam Sprayer and coat your car in a layer of foam. Allow the soap to sit for a few minutes (or as directed by the manufacturer) for it to penetrate any dirt or grime.

Note: Keep the car surface wet to prevent any discolouration or damage from the detergent.

- Swap back to the Auto Nozzle and rinse down your car.

CONNECT TO TAP

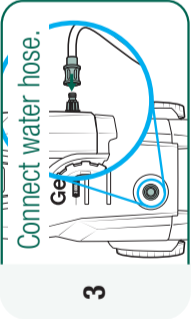
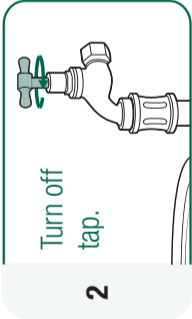
WARNING! High pressure jets can be dangerous if subject to misuse. The jet must not be directed at persons, live electrical equipment or the machine itself.

WARNING! Do not point the spray jet at any part of your body, other people, pets or animals. The pressurised water stream can cause cuts and injuries.

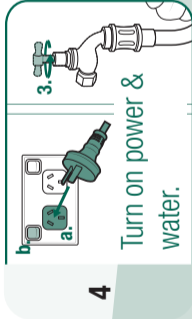
WARNING! Always wear safety boots, safety gloves, safety helmet with visor and hearing protection while operating the equipment.

WARNING! Ensure that the spray jet is not directed at power lines, electrical outlets and electronics.

WARNING! High pressure hoses, fittings & couplings are important for the safety of the user. Use only hoses, fittings & couplings supplied.



Note: The water inlet is fitted with a mesh inlet filter. This filter must be in place to prevent impurities in the water source from entering the unit and damaging the pump.

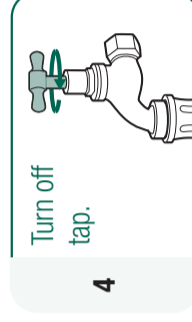
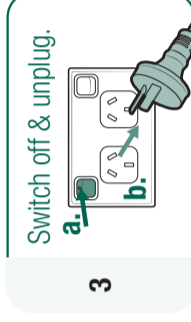
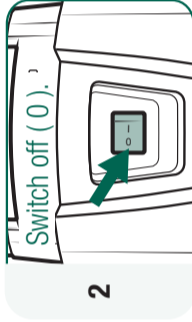
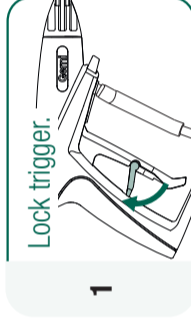


WARNING! Always test the spray jet on a small inconspicuous area to ensure the settings won't cause any damage to the spray surface.

TAKE A BREAK

WARNING! High pressure jets can be dangerous if subject to misuse. The jet must not be directed at persons, live electrical equipment or the machine itself.

WARNING! Perform the procedure below if taking a break for more than 5 minutes. Failure to do so may damage the pump or cause the equipment to overheat and malfunction.



NOT WORKING?

SYMPTOM	POSSIBLE CAUSE	RECOMMENDED ACTION
Fluctuating Pressure	Pump is drawing in air	Check that hoses and connections are airtight
	Insufficient water supply	Increase water supply at the tap, check for blockages or kinks in the hose and/or swap to a larger diameter hose
	Accessory nozzle dirty or blocked	Clean accessory nozzle bore as there may be a blockage from dirt or debris please use cleaning needle provided
The machine stops mid-use	Incorrect mains voltage	Check that the mains voltage corresponds to the specification on the model tag
	Thermal sensor activated	Leave pressure washer for 5 minutes to cool down
	Nozzle partially blocked	Please refer to Care & Cleaning (step 5) section of the user manual
Machine Pulsating/inconsistent spray	Air in the inlet hose/pump	Press & hold the spray gun trigger and allow the machine to run until normal working pressure resumes
	Kinked water hose	Unwind the water hose fully
	Insufficient water supply	Increase water supply at the tap, check for blockages or kinks in the hose and/or swap to a larger diameter hose.
No water emitted	Water filter blocked	Clean the inlet filter
Machine often starts and stops by itself	Blocked nozzle	Use cleaning needle to clean outlet
	Spray gun may be leaking due to worn/damaged O-ring	Please contact your closest Gerni Authorised Repair Agent www.gerni.com.au

STORAGE

- 1 Turn off tap.
- 2 Switch off (0).
- 3 Drain water from Spray Gun.
- 4 Remove water hose.
- 5 Disconnect Spray Gun.
- 6 Switch on (1).
- 7 Drain High Pressure Hose.
- 8 Switch off (0).
- 9 Disconnect High Pressure Hose.
- 10 Switch off & unplug.
- 11 Dry parts before storage.

CARE & CLEANING

- ! WARNING!** Ensure the tool is turned off and disconnected from the power supply before performing any of the following operations.
- 1 Switch off (0).
 - 2 Switch off & unplug.
 - 3 Disassemble accessories.
 - 4 Rinse accessories.
 - 5 Clean Nozzles.
 - 6 Remove Water Inlet Coupling & Filter.
 - 7 Rinse Inlet Filter.
 - 8 Dry parts before storage.
- INSPECT, REPLACE IF DAMAGED**

DEFINITIONS

- Read instruction manual
- Double insulated
- Regulatory compliance mark
- Warning!
- Wear safety helmets with visors
- Wear gloves
- Wear hearing protection
- Wear closed-toe shoes
- Not suitable for connection to potable water mains
- Warning! High pressure jets can be dangerous if not used properly. Do not direct the jet at persons, animals, live electrical equipment or the pressure washer itself
- V** Volts
- Hz** Hertz
- ~** Alternating Current
- W** Watts
- L/min** Litres per minute
- psi** Pounds per square inch
- MPa** Mega Pascals
- IPX5** Ingress protection from water

DISPOSAL ADVICE

- POWER TOOL**
Power tools that are no longer usable should not be disposed of with household waste but in an environmentally friendly way. Please recycle where facilities exist. Check with your local council authority for recycling advice.
- PACKAGING**
Recycling packaging reduces the need for landfill and raw materials. Reuse of recycled material decreases pollution in the environment. Please recycle packaging where facilities exist. Check with your local council authority for recycling advice.

NEED HELP?

- www.gerni.com.au
- customerservice@gerni.com.au
- AUS** 1300 162 689
- NZ** 0800 700 124